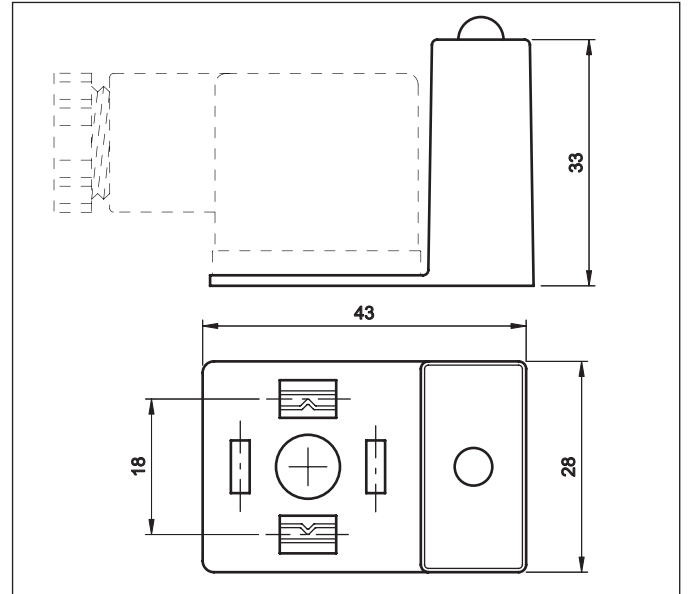


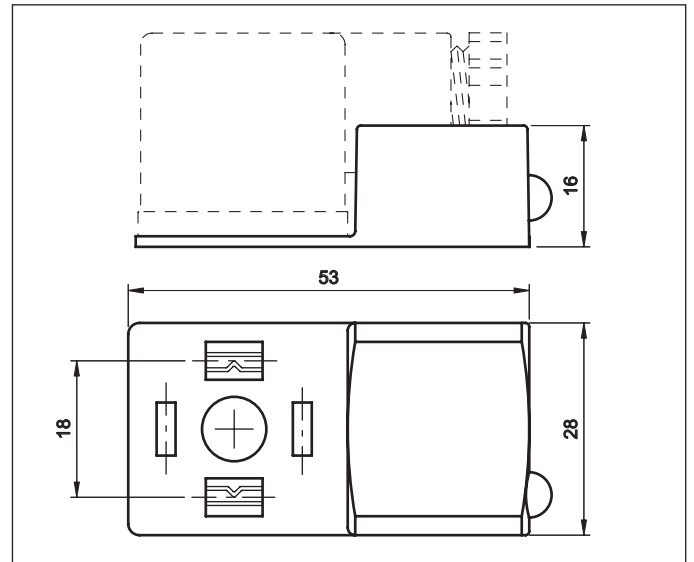
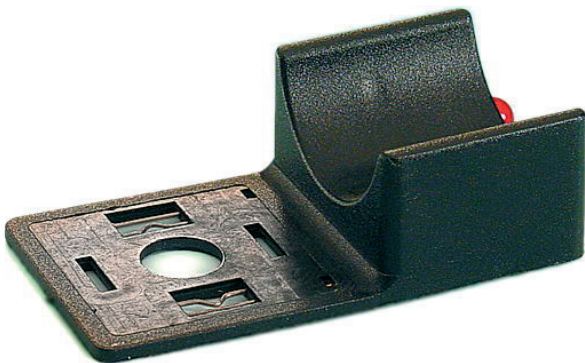


ADATTATORI ANTIDISTURBO
SURGE SUPPRESSOR ADAPTORS
ENTSTÖRUNGSGLIEDER

FORMA A



FORMA RA



Scatola:
Housing:
Gehäuse:

PA + 30% FV
PA + 30% GF
PA + 30% GF

Distanza tra i contatti:
Spacing:
Abstand:

18 mm.

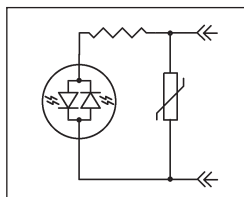
Temperatura di funzionamento:
Working temperature:
Betriebstemperatur:

-40°C / +125°C

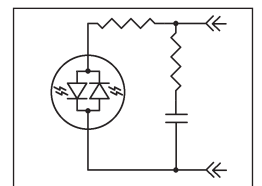
Grado di protezione:
Protection class:
Schutzart:

IP 65 DIN 40050

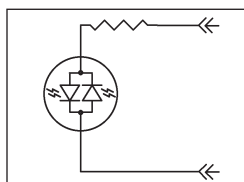
Volt	Codice/Code	
	FORMA A	FORMA RA
24	EAGR	ERAGR
48	EAHR	ERAHR
110	EAJR	ERAJR
250	EAKR	ERAKR



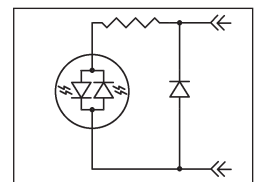
Volt	Codice/Code	
	FORMA A	FORMA RA
10/50	EAUR	ERAUR
70/250	EAXR	ERAXR



Volt	Codice/Code	
	FORMA A	FORMA RA
10/50	EABR	ERABR
70/250	EACR	ERACR



Volt	Codice/Code	
	FORMA A	FORMA RA
10/50	EAMR	ERAMR
70/250	EANR	ERANR



Codici prodotto per la versione standard con LED rosso - Part no. for plain version, red LED - Teile-Nr. für Standardausführung, rote LED-Anzeige